

PARENT INFORMATION NOTE

GRACE LUTHERAN SCHOOL
VOL. 25

2825 Alameda de las Pulgas, San Mateo, CA 94403

www.gracelutheransanmateo.org

May 25, 2010

(650) 345-9082

No. 37

1. **CHAPEL OFFERINGS** for fourth quarter will be used to assist Seminarian David Solum who is studying to become a pastor. He is attending Concordia Theological Seminary, Ft. Wayne, IN. To date, \$144.29 has been received.
2. **PATRIOTIC SPIRIT DAY** is this Friday, May 28th. Leave your uniform home and dress in red, white, and blue. No teams, cartoon figures, pictures, rock groups, or advertising. Those who do not wish to participate with the theme are to wear their school uniform. If you have any questions, contact your child's teacher.
3. **NO SCHOOL/NO EXTENDED CARE** on Monday, May 31st in observance of Memorial Day.
4. **CALENDAR CHANGE:** Grace School Choir (3-8) and Primary Choir (K-2) will be singing on Sunday, June 13th at the 9:00 a.m. service (not June 6th).
5. **S.A.T. RESULTS:** Results of the Stanford Achievement Tests for grades 1-8 are available from your child's teacher.
6. **CUSTOMER APPRECIATION DAY** for Grace Lutheran School families at Dennis Uniforms is Thursday, July 22, 2010 from 10:00 a.m. until 6:00 p.m. Dennis Uniform is located at 1282 Oddstad Drive, Redwood City (650-299-9623). All purchases that day will receive a 10% discount.
7. **YEARBOOKS:** Don't forget your school memories! Cost is \$30.00 per copy. Please make checks payable to "Grace Lutheran School P.T.L."
8. **THANK YOU** to all who helped with the P.T.L. Talent Show this past Tuesday.
9. **THANK YOU** to all who participated in the Academic Faire and to the P.T.L. for the wonderful picnic dinner this past Friday.
10. **VACATION BIBLE SCHOOL** will be held June 21-25, 2010 from 9:00 a.m. until 12:00 noon for ages 4 to 6th grade (7th & 8th graders are welcome to help). Register online at www.glessm.org.
11. **FIELD DAY** is Thursday, June 3rd. Volunteers are needed for this fun-filled day at the park. If you are in need of completing mandatory hours and can help on field day, please contact Mrs. Meier.
12. **END-OF-THE-YEAR P.T.L. WORK DAY** is Saturday, June 5th from 9:00 a.m. until 12:00 noon. Volunteers are needed to clean the classrooms and to assist the teachers. Please bring cleaning supplies.
13. **MANDATORY HOURS:** Completed forms for the 2009-2010 school year are due Friday, June 4th. If you have any questions, please contact Lori Hahn.
14. **INFORMATION AND BROCHURES** on summer schools, camps, athletics, and activities are available in the office.

Attachments: Early Bird Savings at Dennis Uniforms
eScrip fliers
7th & 8th Field Trip

Vacation Bible School
P.T.L. Mandatory Hours (Form D)

early bird savings

avoid the back to school rush

June 10-July 10, 2010, 10% savings
on all purchases and orders... phone,
mail, internet and in-store.

Excludes marked down items.

online www.dennisuniform.com

National Customer Service

800.854.6951

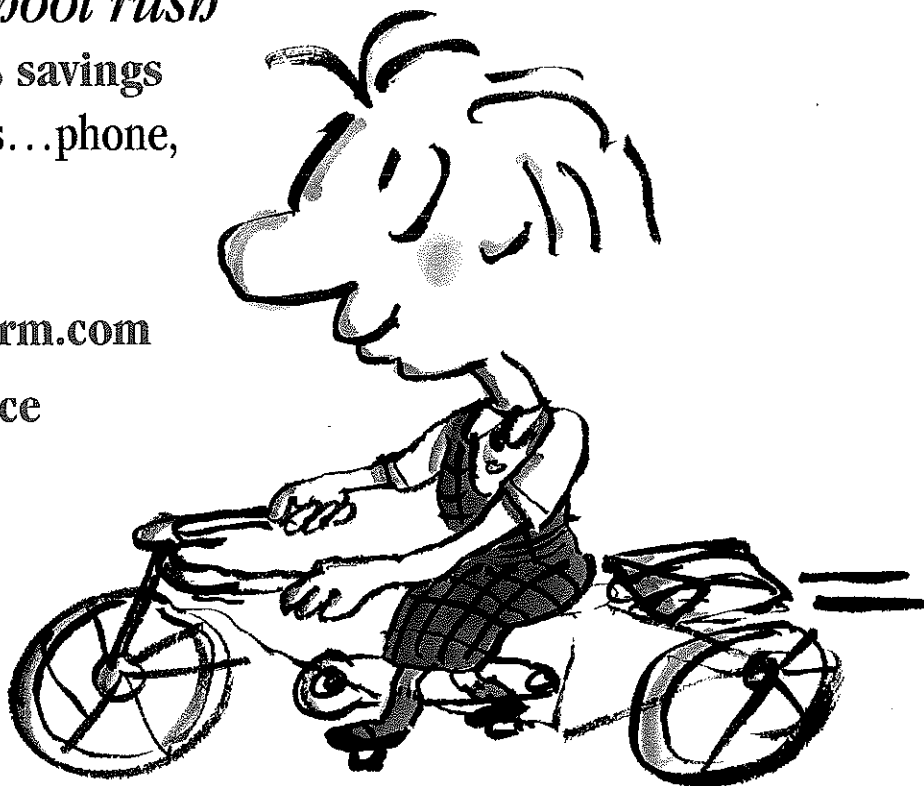
Redwood City Branch

1282 Oddstad Drive

Redwood City, CA 94063

Phone (650) 299-9623

Fax (650) 299-9624



DENNIS®

school uniforms since 1920

Grace PTL asks for your commitment to our school by signing-up today!



www.escrip.com

to benefit OUR SCHOOL

What is eScrip and how does it work?

Escrip is an easy way for schools like ours to earn money through everyday purchases at Safeway and many other eScrip merchants.

Once registered, Escrip contributes a percentage of your credit, debit and grocery club card purchases to Grace Lutheran School.

You pay no additional cost. it is all covered by the merchant.

School Parents, Congregation Members, friends and families are encouraged to register with the eScrip program.

You can register grocery club cards, VISA, MasterCard, American Express, Discover, Diners Club, debit/ATM cards. Registering credit cards earn the most for our school.

Simple registration

1. Log on to escrip.com and go to "sign-up".
2. Designate "Grace Lutheran School, San Mateo" to receive contributions.
3. Register your grocery club card(s) and your debit/creditcards.

The process takes only 10 minutes or less and helps so much!

Or use the attached form to register by mail. If you bring the form into the office. Stamped envelopes will be available.

If you are already signed-up, THANK YOU.

REMEMBER: Each year you MUST re-knew your SAFEWAY account on eScrip. Go to escrip website and click "Safeway re-knew here"



Grace Lutheran Church & School

eScrip

Merchant Guide



Automotive

| | | | | | |
|------------------|----|------------------------|----|---------------------------|----|
| 89glass.com | 5% | eScrip.DriversEd.com | 5% | Walnut Creek Transmission | 2% |
| Big O Tires | 2% | Main Street Automotive | 2% | Webtrafficschool.com | 5% |
| Ducky's Car Wash | 4% | Portola Valley Garage | 2% | | |

Retail

| | | | | | |
|--|----------|---|----------|---------------------|----|
| Eddie Bauer | 5% | Macys.com | 1% | Sierra Trading Post | 5% |
| Lullaby Lane Toddler to Teen Furniture | up to 2% | Macysbridal.com | 1% | Ubyan | 4% |
| Macy's | 1% | Peninsula Beauty Supply | up to 3% | | |
| | | <i>Shop Online at www.peninsulabeauty.com</i> | | | |

Grocers

| | | | | | |
|---------------------------|------------|----------------------------|----------|--------------------------------|----------|
| Andronico's | up to 4% | JJ&F Market | up to 5% | Podesto's Market & Deli | up to 4% |
| Bianchini's Market | up to 5% | Key Markets | up to 4% | PW Supermarkets | up to 4% |
| Bristol Farms | up to 4% | Kingsburg Supermarket | up to 4% | Sacramento Natural Foods Co-op | up to 4% |
| Cal-Mart | up to 5% | Lira's Supermarket | up to 4% | Safeway | up to 4% |
| Cosentino's Markets | 4% | Lunardi's Markets | up to 4% | Safeway.com | up to 4% |
| DeLano's IGA | up to 4% | Mollie Stone's | up to 4% | Scotty's Market | up to 4% |
| Diablo Foods | up to 5% | New Leaf Community Markets | up to 5% | Sonoma Market | up to 5% |
| Draeger's Market | up to 2% | Pak 'n Save | up to 4% | Trag's Market | up to 4% |
| Evergreen Market | up to 4% | Paradise Foods | up to 5% | Vallergas Markets | 5% |
| Fircrest Market | up to 3% | Payless Market | up to 5% | Vic's Markets | up to 4% |
| Food 4 Less | 3% | Petaluma Market | up to 3% | Village Market | up to 3% |
| Foodville | up to 5% | Piazza's Fine Foods | up to 5% | Wildberries Marketplace | up to 4% |
| Gene's Fine Foods | up to 2.5% | Piedmont Grocery | 4.4% | Woodland Markets | up to 6% |
| Glen Ellen Village Market | up to 5% | Planet Organics | up to 4% | | |

Restaurants

| | | | | | |
|--------------------------|----------|------------------------|----------|--------------------------|----|
| Claim Jumper Restaurants | 5% | Rewards Network Dining | up to 5% | The Duck Club Restaurant | 5% |
| Le Boulanger | up to 3% | Round Table Pizza | up to 6% | | |

Specialty Items & Coupons

| | | | | | |
|---|----------|----------------------|----------|---|------------|
| Anna's of San Francisco | up to 5% | Final Wrap | 10% | Private Education Network | 5% |
| <i>866-SFANNAS - www.annascookies.com</i> | | Goldspeed.com | 5% | Sacramento Bee | 10% |
| Carlmont Pharmacy | up to 3% | Haldane Computers | 2% | <i>(New Subscriptions or conversion to EZPay)</i> | |
| DiscountedNewspapers.com | 20% | Liberty Tax Service | 7% | San Francisco Chronicle | up to \$10 |
| <i>Call OR visit us online to order any national or regional paper 866-230-1301</i> | | Mugshots Photography | up to 5% | <i>(New Subscriptions or conversion to EZPay)</i> | |
| eScrip Visa | up to 2% | Pacific Dental Group | 5% | | |

Sporting Goods

| | | | |
|-------|----|--------------|----------|
| Orvis | 5% | Outdoor Kids | up to 5% |
|-------|----|--------------|----------|

Travel & Transportation

| | | | |
|---|----|--|----------|
| American Airlines Flight Certificates | 3% | Club Cruise | up to 5% |
| <i>Ordered through Mitch-Stuart, Inc. 1-800-574-9991.</i> | | <i>(leader in the cruise industry)</i> | |

Visit www.escrip.com for participating merchant locations.

**GRACE LUTHERAN SCHOOL
2825 ALAMEDA DE LAS PULGAS
SAN MATEO, CA 94403
650-345-9082**

FIELD TRIP PERMISSION FORM

_____ has my permission to go on the 7th & 8th Grade field trip with Miss Ehlers to the Wax Museum and Pier 39 located in San Francisco, CA on Thursday, June 3, 2010, leaving at 9:00 a.m. and returning at 3:30 p.m. I understand my child will be going in a privately owned and insured car.

Parent Signature

WHAT TO BRING: money for lunch and spending (\$20.00)

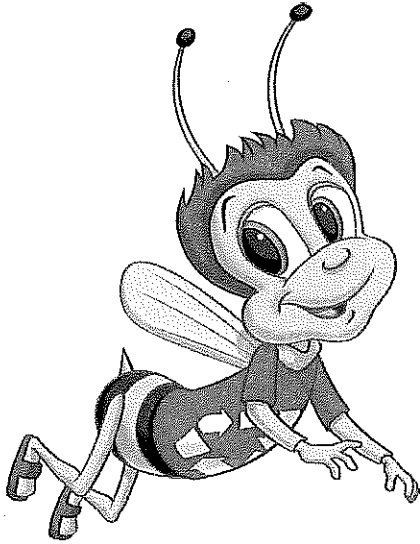
DRIVERS ARE NEEDED: _____ Yes, I am able to drive. I have seat belts for _____ students.

_____ No, I am not able to drive.

SCHOOL UNIFORMS AND SCHOOL SWEATERS ARE TO BE WORN

Sign and return by Friday, May 28, 2010.

Join us for Grace Lutheran Church Vacation Bible School 2010



DATES:

**June 21 - 25, 2010
9:00 am - Noon**

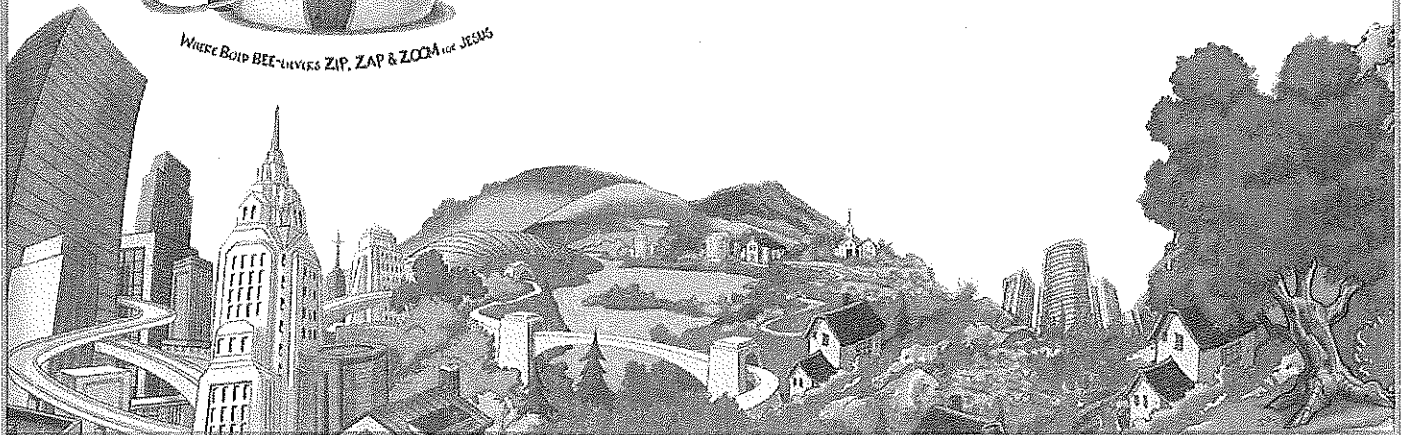
**at Grace Lutheran School
2825 Alameda de las Pulgas
San Mateo, CA 94403**

Go to www.GLCSSM.org
to download a
registration form

- Ages 4 years to 6th grade
(one year of pre-school required)
- Pre-registration preferred
- Return registration form to Grace Lutheran
Church Office (address above)
- Call 650-345-9068 for further information



WHERE BOIP BEE-LIEVES ZIP, ZAP & ZOOM *for* JESUS



**PTL COPY
GRACE LUTHERAN SCHOOL
PARENT TEACHER LEAGUE
MANDATORY HOURS COMMITMENT FORM**

The purpose of this form is to record your mandatory hours completed each quarter of the school year.
Each Form (A, B, C, D) **MUST** be turned in at the end of each quarter on the date noted.
Form D will be submitted late May 2010 (prior to school yearend).

Enter your completed hours in the space provided – submit the form to the office. Retain a copy for your records.

Hours may be completed for ANY faculty/staff member, and may be done at home or in school.
***** **HOURS NOT COMPLETED / SUBMITTED WILL BE BILLED @ \$10.00 PER UNCOMPLETED HOUR** *****
If you have any questions regarding your mandatory hours, please call Lori Hahn at 650.218.8240.

COMPLETION OF FORM IS REQUIRED

FORM A Due November 6, 2009
FORM B Due January 29, 2010
FORM C Due April 2, 2010
****FORM D Due May 28, 2010****

Family Name _____

Oldest Child's Name _____ and Grade _____

| Date | Event or Activity | HOURS |
|---|--|--|
| May 7, 2010 | Grades 5 – 8 Play | |
| May 18, 2010 | PTL General Meeting – Talent Show (1 Hr) | |
| May 21, 2010 | Academic Faire – PTL Picnic Dinner | |
| June 3, 2010 | Field Day | |
| June 4, 2010 | Kindergarten Graduation | |
| June 5, 2010 | PTL Work Day (9-12noon) | |
| | | |
| | | |
| | | |
| | | |
| | | |
| | | |
| | | |
| | | |
| | | |
| | | |
| TOTAL HOURS >>>>>>>> | | HRS |
| DUE MAY 28, 2010 | | Quarterly Goal 7.5 hours Annual Goal 30.0 hours (15.0 Hours Single Parents) |